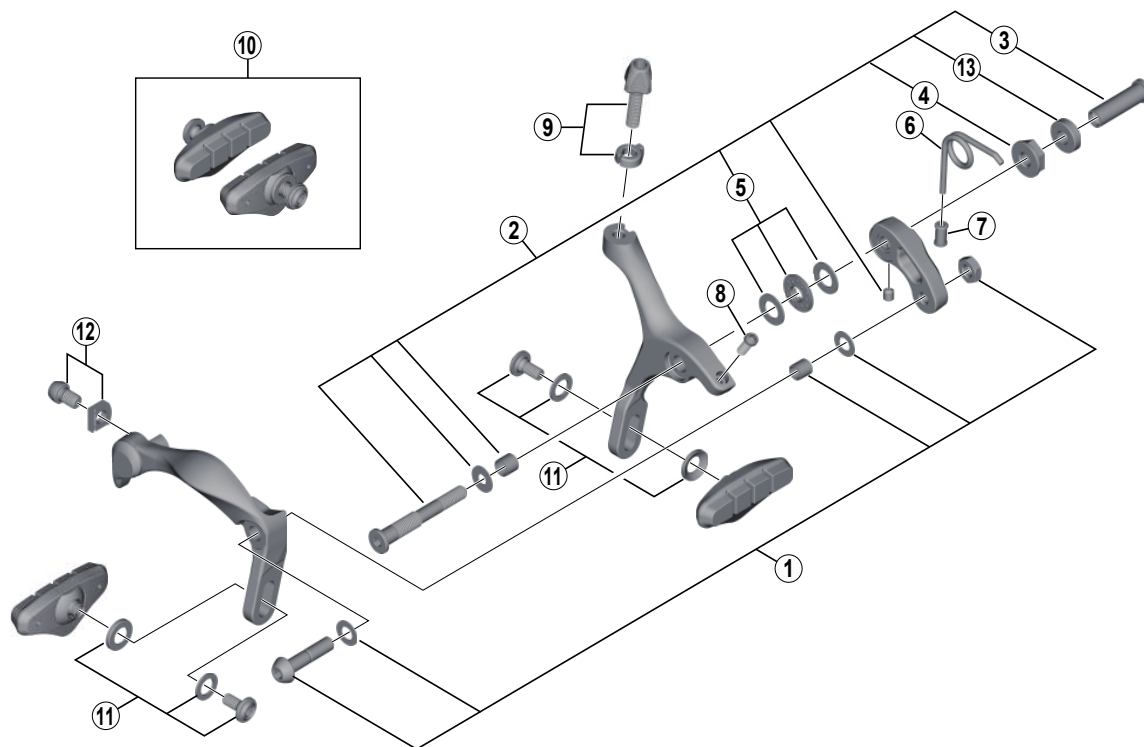


TIAGRA Caliper Brake BR-4700



ITEM NO.	SHIMANO CODE NO.	DESCRIPTION	INTERCHANGEABILITY	
			BR-4600	BR-3500
1	Y8MG98010	Arm Bolt Unit (M6 x 26.5)	A	A
2	Y8MG98020	Front Pivot Bolt Assembly {Pivot Bolt: 50.4 mm (2") / Pivot Nut: 10.5 mm}	A	A
	Y8MG98030	Front Pivot Bolt Assembly {Pivot Bolt: 50.4 mm (2") / Pivot Nut: 12.5 mm}	A	A
	Y8MG98040	Front Pivot Bolt Assembly {Pivot Bolt: 50.4 mm (2") / Pivot Nut: 18.0 mm}	A	A
	Y8MG98050	Front Pivot Bolt Assembly {Pivot Bolt: 50.4 mm (2") / Pivot Nut: 27.0 mm}	A	A
	Y8MG98060	Front Pivot Bolt Assembly {Pivot Bolt: 50.4 mm (2") / Pivot Nut: 32.0 mm}	A	A
	Y8MG98070	Rear Pivot Bolt Assembly {Pivot Bolt: 35.7 mm (1-13/32") / Pivot Nut: 10.5 mm}	A	A
3	Y85575110	Pivot Nut (10.5 mm) for Front/Rear	A	A
	Y85575020	Pivot Nut (12.5 mm) for Front	A	A
	Y85574010	Pivot Nut (18.0 mm) for Front	A	A
	Y8A023000	Pivot Nut (27.0 mm) for Front	A	A
	Y8A023300	Pivot Nut (32.0 mm) for Front	A	A
4	Y8E604000	Lock Nut	A	A
5	Y84B98050	Ball Retainer Unit (ø7)		
6	Y8MG27000	Arm Spring for Front		
	Y8MG27010	Arm Spring for Rear		
7	Y8BY08000	Spring Bush	A	A
8	Y8JY10000	EC-Screw (M4 x 10.2)	A	A
9	Y8MG98080	Cable Adjusting Bolt & Clip	B	B
* 10	Y8MG98090	R50T5 Brake Shoe Set (5 pairs)	B	B
	Y8L998010	R50T4 Brake Shoe Set (5 pairs)	A	A
11	Y8MG98100	Shoe Fixing Bolt Unit	B	B
12	Y8BT98010	Cable Fixing Bolt (M6 x 9) & Plate	A	A
* 13	Y85850120	Washer D6		

A: Same parts.

B: Parts are usable, but differ in materials, appearance, finish, size, etc.

Absence of mark indicates non-interchangeability.

Specifications are subject to change without notice.

Jul.-2015-3865A

© Shimano Inc. I

SHIMANO